



Noise Monitoring Result

Day Time (0700 - 1900hrs on normal weekdays)

Location: M1a - Footbridge at EX-Wanchai Harbour Road Sports Centre

Date	Time	Weather	Measurement Noise Level			Baseline Level	Construction Noise Level	Limit Level
			Leq	L10	L90	Leq	Leq	Leq
Unit: dB(A), (30-min)								
1/2/19	13:00	Fine	71.3	73.6	68.5	72	71	75
4/2/19	15:30	Fine	71.3	74.6	69.5	72	71	75
12/2/19	11:24	Fine	70.3	73.0	67.0	72	70	75
22/2/19	13:00	Fine	73.7	75.4	70.5	72	68	75
1/3/19	15:15	Cloudy	74.3	77.3	68.5	72	70	75



Noise Monitoring Result

Day Time (0700 - 1900hrs on normal weekdays)

Location: M2b - Noon-day gun area

Date	Time	Weather	Measurement Noise Level			Baseline Level	Construction Noise Level	Limit Level
			Leq	L10	L90	Leq	Leq	Leq
Unit: dB(A), (30-min)								
1/2/19	14:13	Fine	65.7	68.3	63.4	68	66	75
4/2/19	16:30	Fine	68.2	70.6	66.0	68	59	75
11/2/19	11:13	Cloudy	67.5	69.0	65.0	68	68	75
18/2/19	16:54	Cloudy	66.7	68.0	64.5	68	67	75
1/3/19	13:45	Cloudy	66.5	68.0	64.5	68	67	75

Location: M3a - Tung Lo Wan Fire Station

Date	Time	Weather	Measurement Noise Level			Baseline Level	Construction Noise Level	Limit Level
			Leq	L10	L90	Leq	Leq	Leq
Unit: dB(A), (30-min)								
30/1/19	08:10	Fine	65.2	67.5	61.3	69	65	75
8/2/19	13:21	Cloudy	65.7	68.3	63.5	69	66	75
12/2/19	09:30	Cloudy	67.0	68.5	64.0	69	67	75
22/2/19	09:57	Fine	70.6	72.0	65.0	69	66	75
28/2/19	09:15	Cloudy	76.1	79.2	66.6	69	75	75



Noise Monitoring Result

Day Time (0700 - 1900hrs on normal weekdays)

Location: M4b - Victoria Centre

Date	Time	Weather	Measurement Noise Level			Baseline Noise Level	Construction Noise Level	Limit Level
			Leq	L10	L90	Leq	Leq	Leq
Unit: dB(A), (30min)								
30/1/19	08:50	Fine	73.9	75.0	65.5	67	73	75
8/2/19	14:06	Cloudy	64.8	66.5	61.5	67	65	75
12/2/19	08:45	Fine	68.0	69.5	65.0	67	60	75
19/2/19	10:30	Cloudy	70.9	72.0	68.5	67	68	75
28/2/19	09:57	Cloudy	72.0	74.6	65.4	67	70	75

Location: M5b - City Garden

Date	Time	Weather	Measurement Noise Level			Baseline Level	Construction Noise Level	Limit Level
			Leq	L10	L90	Leq	Leq	Leq
Unit: dB(A), (30min)								
30/1/19	09:50	Fine	69.4	70.5	67.5	68	64	75
8/2/19	14:47	Cloudy	69.2	71.7	66.1	68	63	75
12/2/19	10:30	Fine	68.7	70.0	67.0	68	60	75
22/2/19	08:30	Cloudy	69.6	70.5	68.0	68	64	75
28/2/19	10:47	Cloudy	68.9	70.3	66.9	68	62	75

Location: M6 - HK Baptist Church Henrietta Secondary School

Date	Time	Weather	Measurement Noise Level			Baseline Level	Construction Noise Level	Limit Level
			Leq	L10	L90	Leq	Leq	Leq
Unit: dB(A), (30-min)								
30/1/19	11:07	Fine	68.1	69.0	66.5	71	68	65
8/2/19	15:23	Cloudy	66.2	68.5	64.6	71	66	70
15/2/19	11:00	Fine	68.3	69.0	67.0	71	68	65
22/2/19	09:06	Cloudy	68.2	69.0	66.5	71	68	70
28/2/19	11:23	Cloudy	68.5	69.8	67.0	71	69	70



Noise Monitoring Result

Day Time (0700 - 1900hrs on normal weekdays)

Location: M7e - International Finance Centre (Eastern End of Podium) (Reference Station)

Date	Time	Weather	Measurement Noise Level			Baseline Level	Construction Noise Level	Limit Level
			Leq	L10	L90	Leq	Leq	Leq
Unit: dB(A), (30-min)								
29/1/19	15:15	Fine	69.4	71.8	66.6	67	66	N/A
8/2/19	11:26	Fine	65.8	67.0	63.6	67	66	N/A
11/2/19	13:38	Cloudy	66.0	68.0	63.0	67	66	N/A
18/2/19	16:08	Cloudy	68.1	70.6	64.4	67	62	N/A
25/2/19	13:10	Cloudy	66.5	67.5	64.5	67	67	N/A

Location: M7w - International Finance Centre (Western End of Podium)

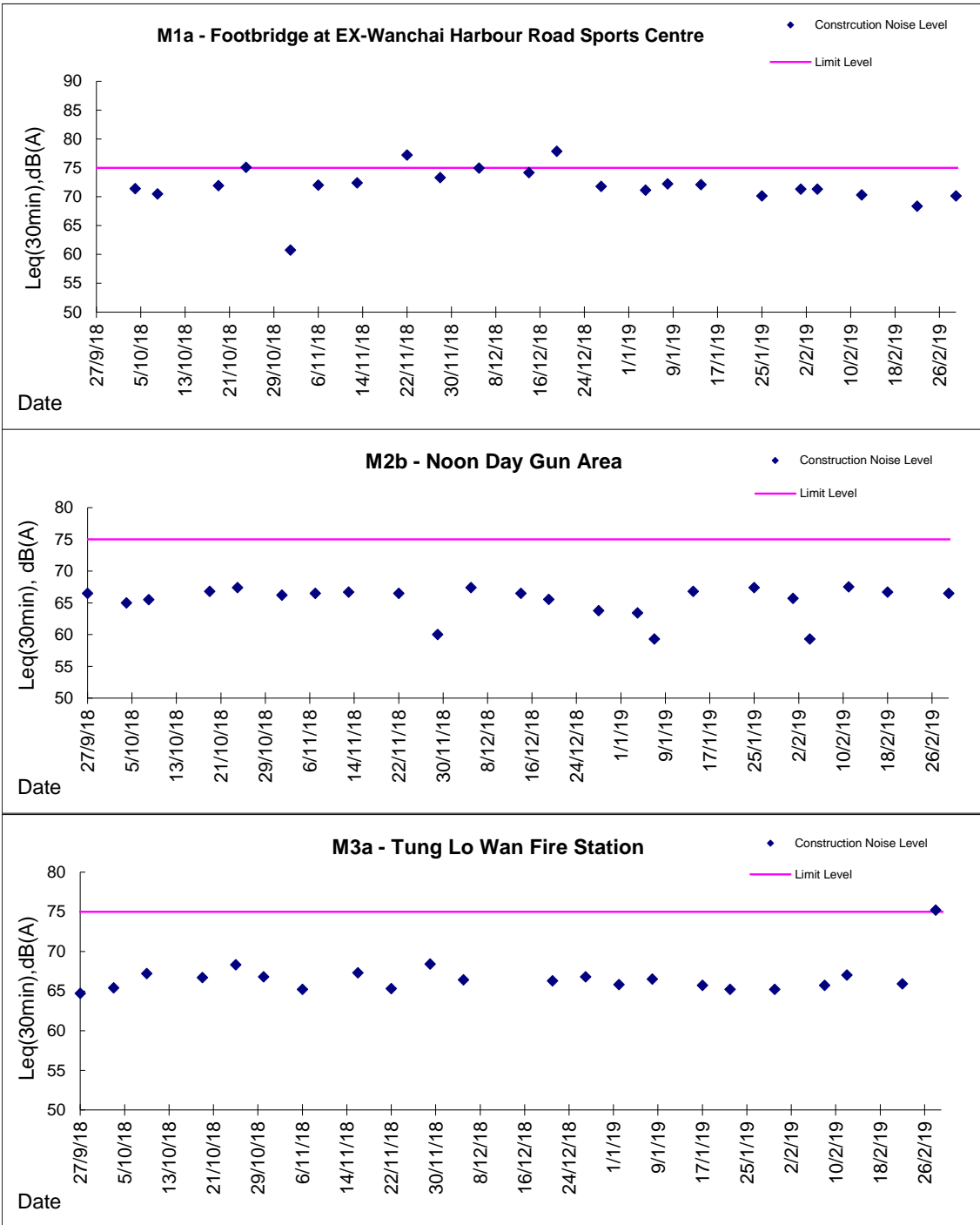
Date	Time	Weather	Measurement Noise Level			Baseline Level	Construction Noise Level	Limit Level
			Leq	L10	L90	Leq	Leq	Leq
Unit: dB(A), (30-min)								
29/1/19	14:40	Fine	67.7	68.5	65.5	69	68	75
8/2/19	10:52	Fine	66.4	68.0	63.5	69	66	75
11/2/19	14:19	Cloudy	66.1	67.5	64.0	69	66	75
18/2/19	15:30	Cloudy	66.8	68.3	63.5	69	67	75
25/2/19	13:45	Cloudy	64.1	66.7	59.4	69	64	75

Location: M8 - City Hall

Date	Time	Weather	Measurement Noise Level			Baseline Level	Construction Noise Level	Limit Level
			Leq	L10	L90	Leq	Leq	Leq
Unit: dB(A), (30-min)								
29/1/19	16:10	Fine	65.0	69.5	62.7	64	58	70
4/2/19	14:47	Fine	63.5	66.1	60.2	64	64	70
11/2/19	15:10	Cloudy	62.9	64.5	60.5	64	63	70
20/2/19	15:24	Fine	62.0	64.5	57.0	64	62	70
25/2/19	14:30	Cloudy	63.6	66.0	59.0	64	64	70

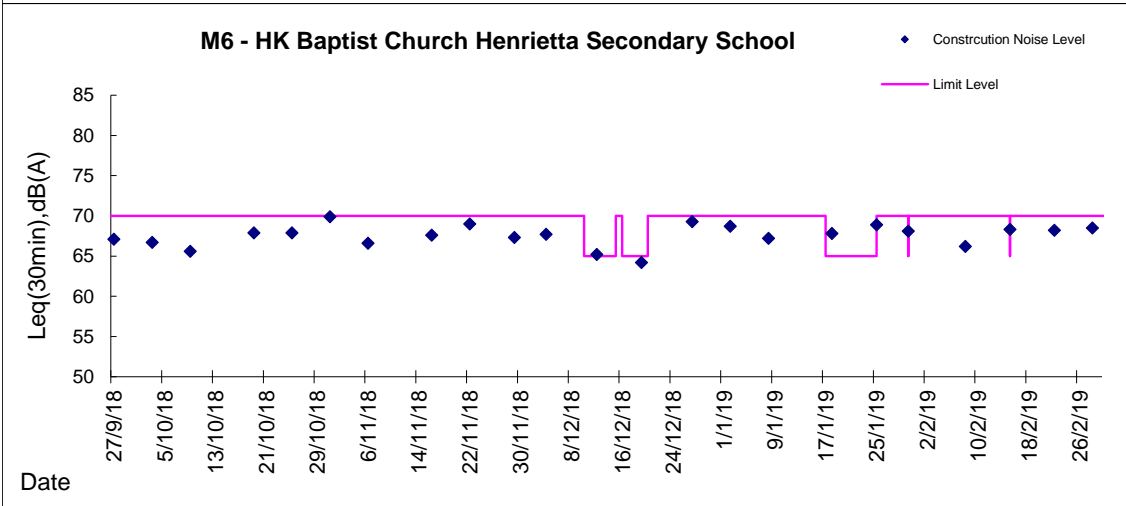
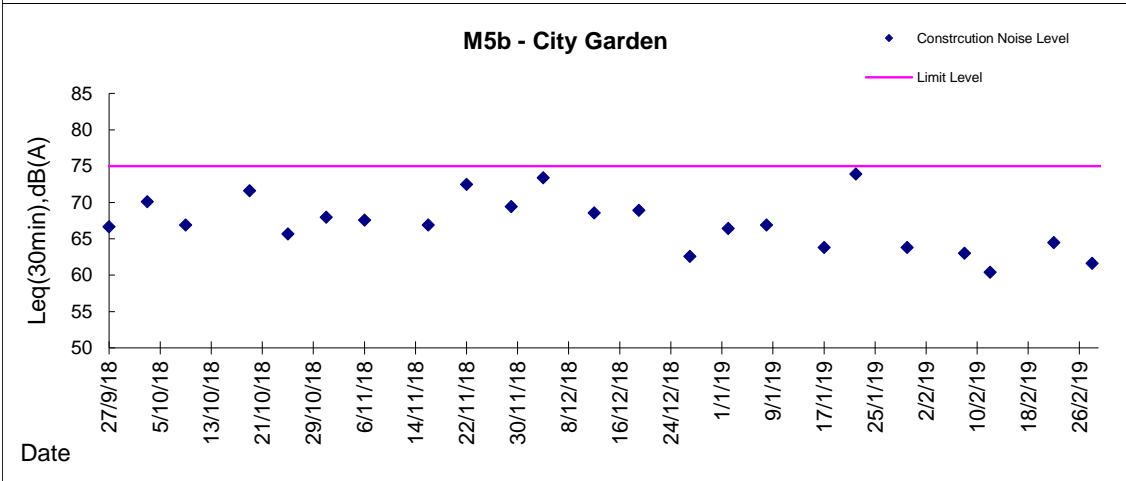
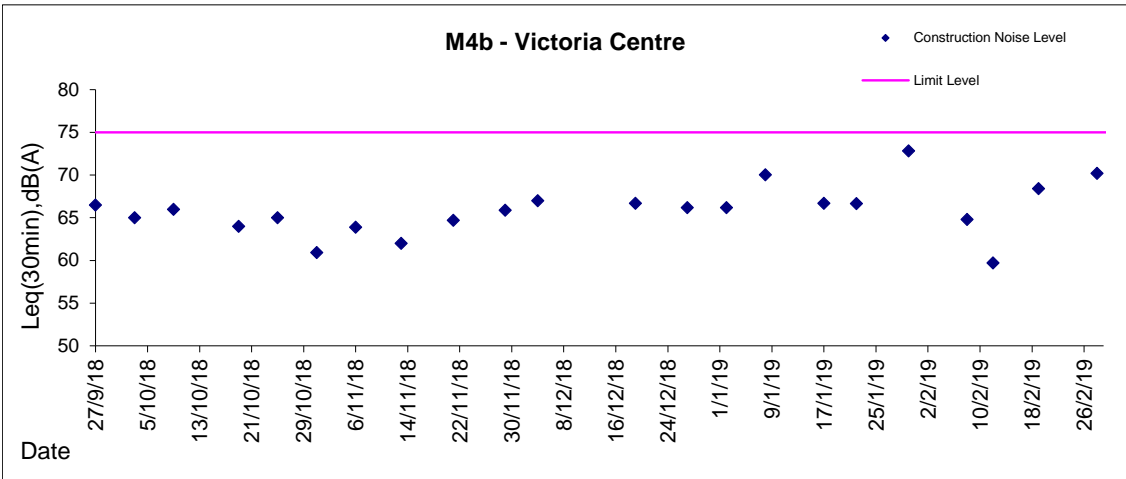
Graphic Presentation of Noise Monitoring Result

Day Time (0700 - 1900hrs on normal weekdays)

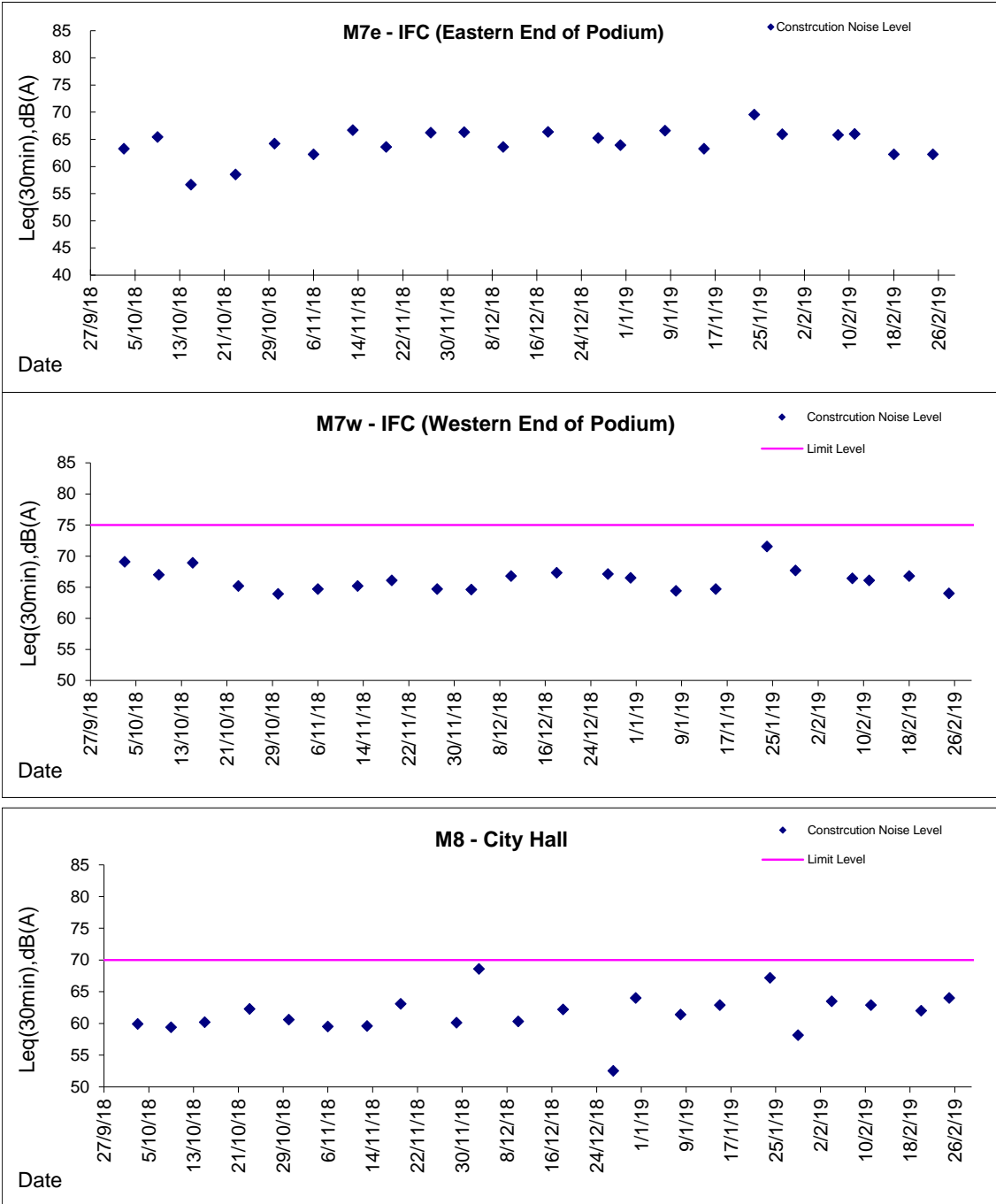




Graphic Presentation of Noise Monitoring Result
Day Time (0700 - 1900hrs on normal weekdays)



Graphic Presentation of Noise Monitoring Result
Day Time (0700 - 1900hrs on normal weekdays)



* Remark: M7e - IFC (Eastern End of Podium) is a reference monitoring station